

WORKSHOP: Seismic isolation and damping of bridge structures

**Goodco Z-Tech seismic equipments
Products and projects overview**
Presented by Pierre Lapalme, P.Eng.

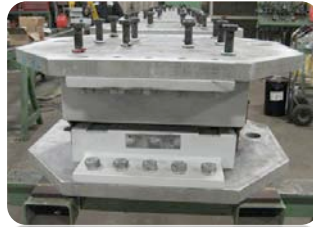


Structural bearings and expansion joints for bridges and buildings

Canadian Leader

Custom-designed products,
for strong and flexible structures

- Structural bearings
 - Seismic and anti-vibration devices
- Expansion joints
- Other bridge related products



Manufacturing Facility

- Total area : 80,000 sq. ft.
- Production area : 70,000 sq. ft.
- Lifting capacity: 60 tons



Laval, QC



**Pot bearings with
self-centering springs and
calibrated energy dissipation**



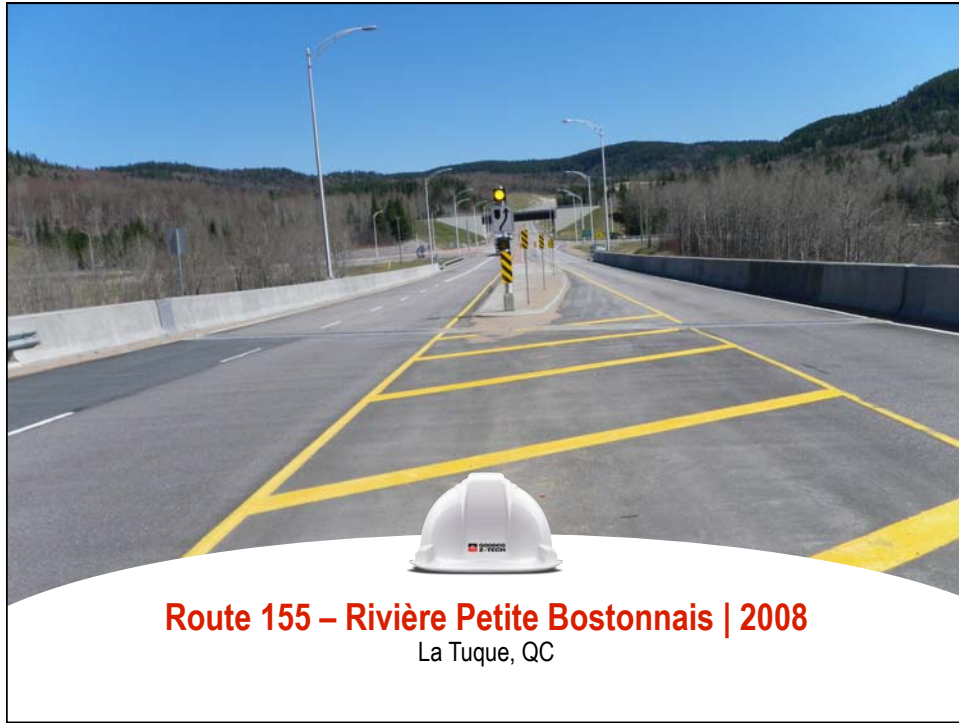
Route 169 – Rivière la Grande Décharge | 2002
Alma, QC



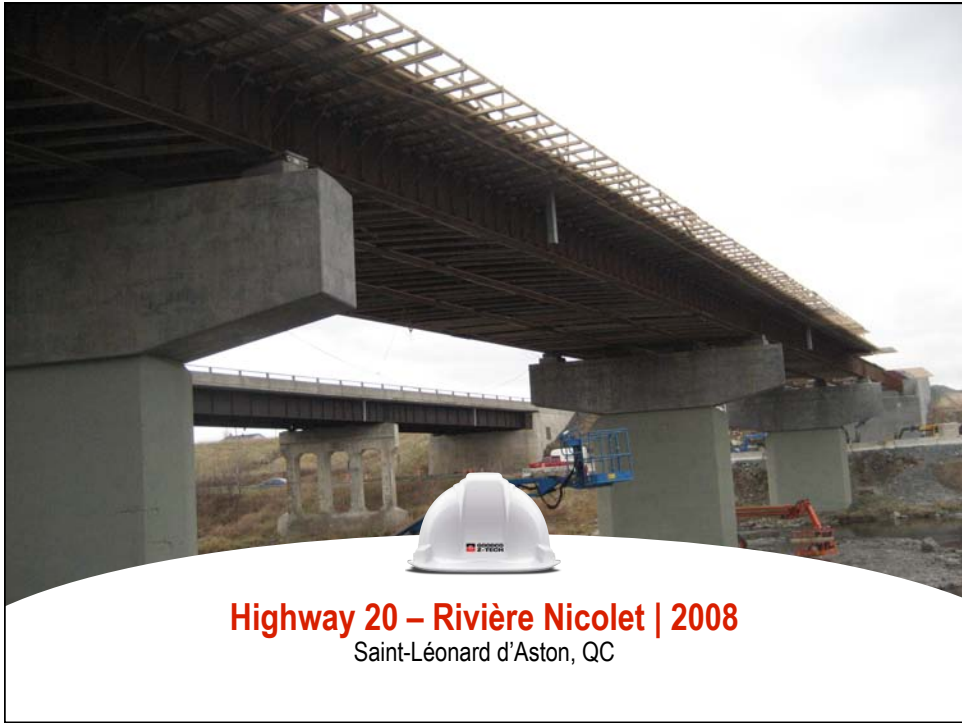
Four longitudinal isolators at the abutment
Rivière la Grande Décharge – Alma, QC



Isolation testing for the Alma project
École Polytechnique de Montréal





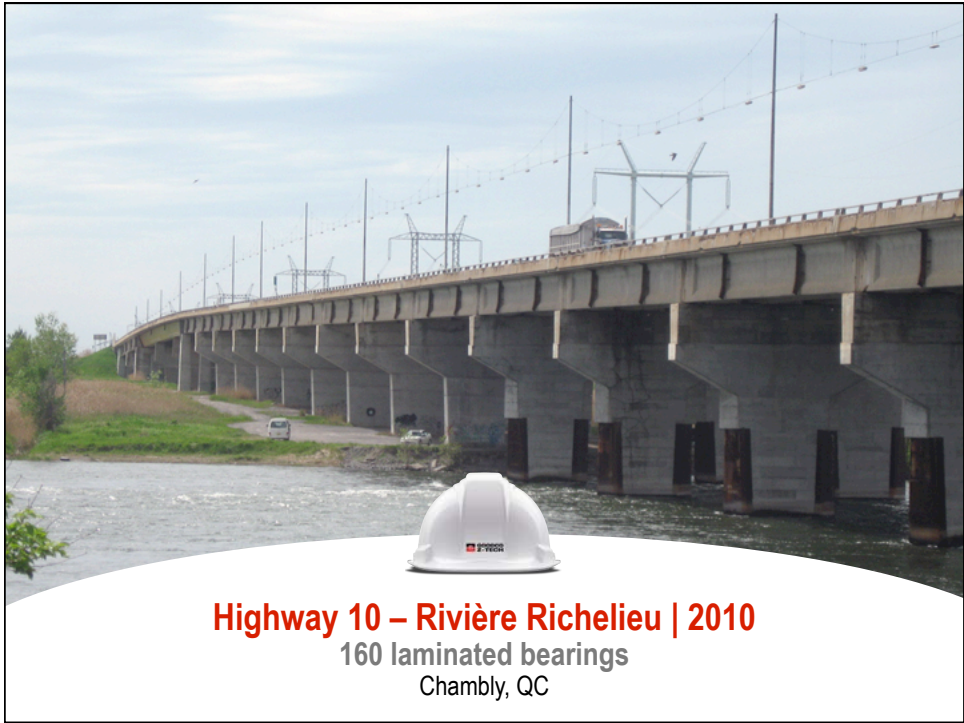




Transversal isolator | Four at each of the three piers
Rivière Nicolet – Saint-Léonard d'Aston, QC



Laminated bearings

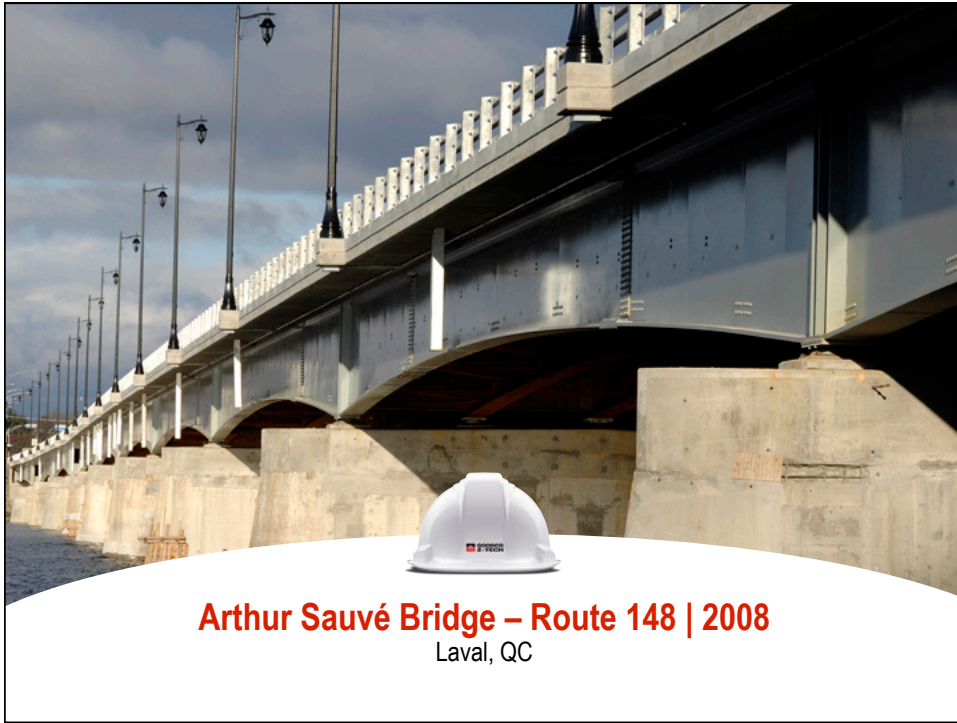


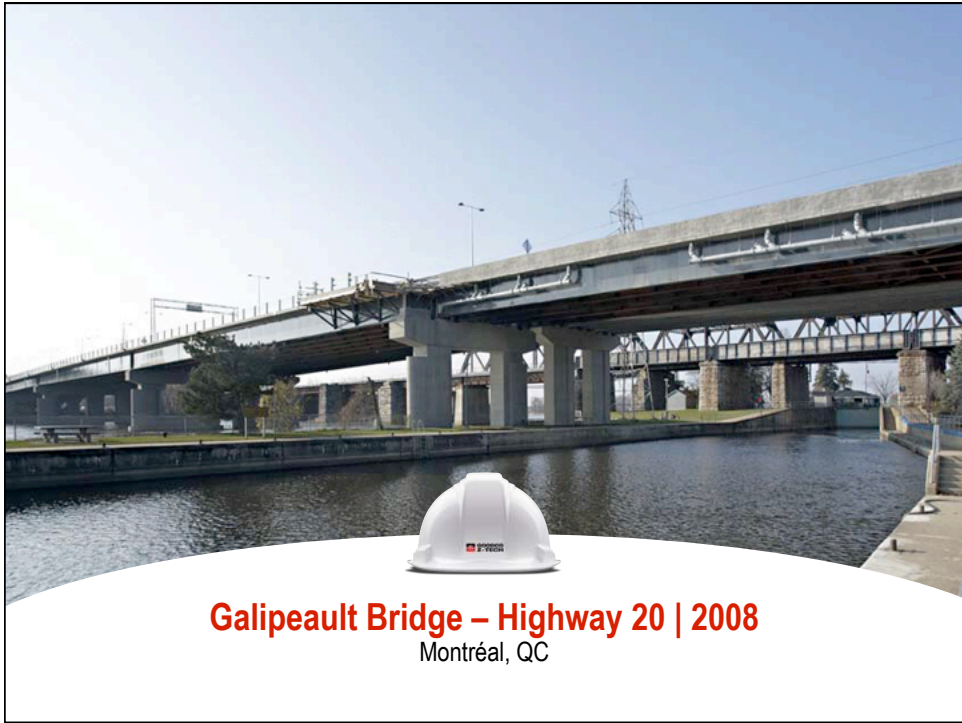


Tests on laminated bearings for the Richelieu project
Sherbrooke University



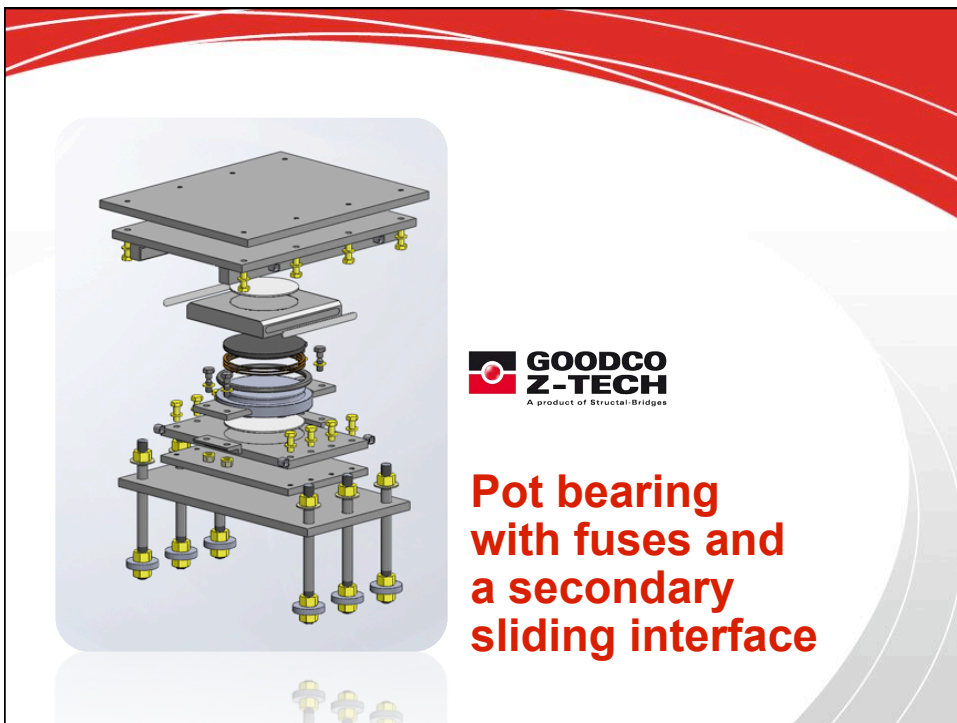
**Pot bearings with
fuses to free movement
during an earthquake**







Brady Bridge | 2007
Gatineau, QC





QUESTIONS?

www.goodcoztech.ws